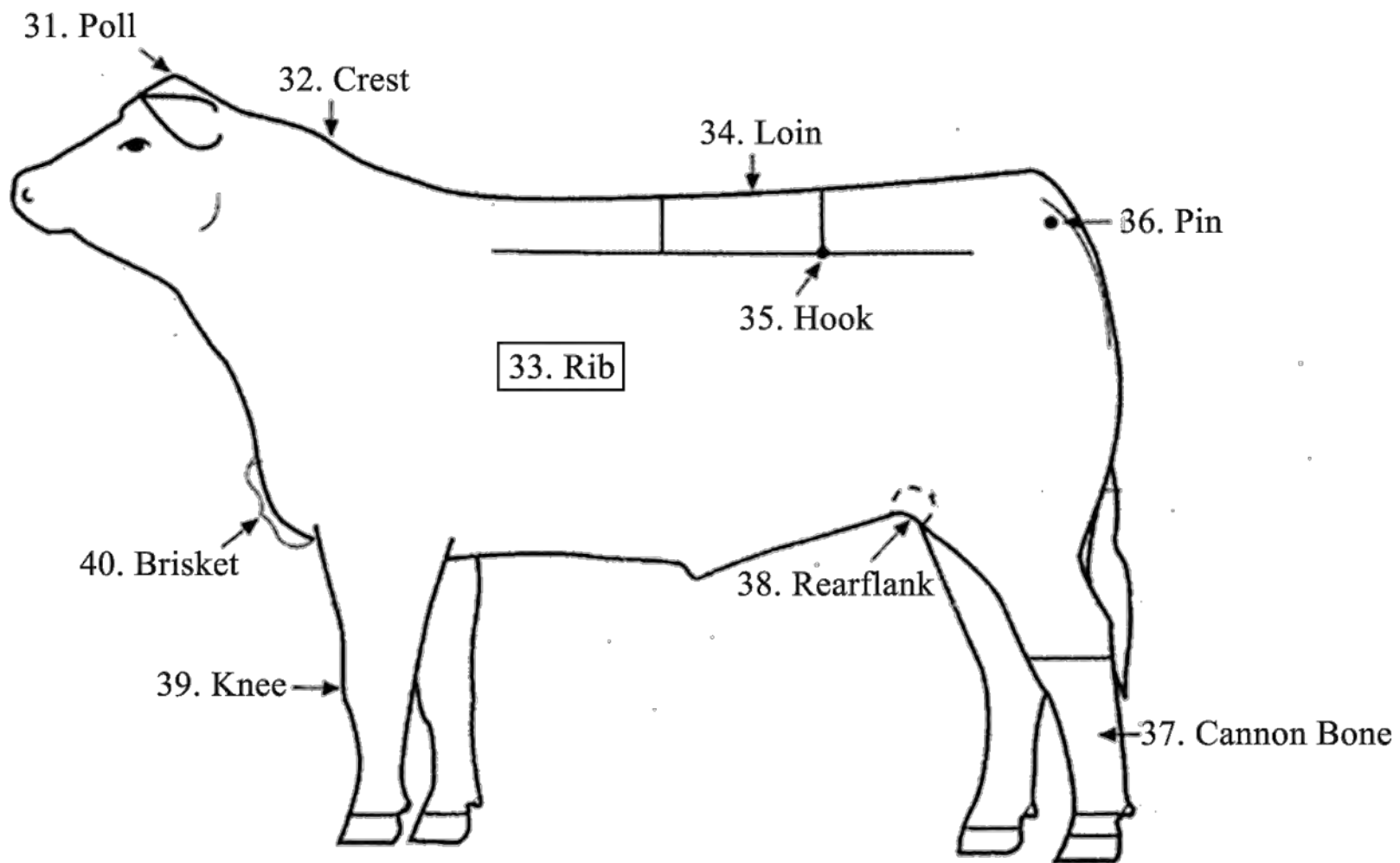


**Wisconsin State Fair**  
**2017 Beef Supreme Exhibitor Contest**

*Parts Identification Answer Key – Questions 31-40*

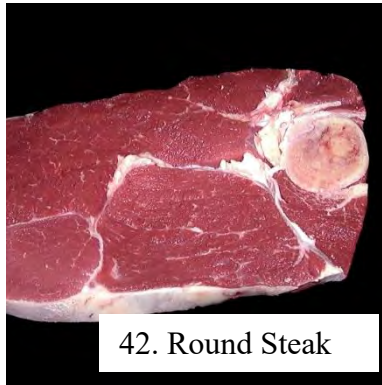


**Wisconsin State Fair**  
**2017 Beef Supreme Exhibitor Contest**

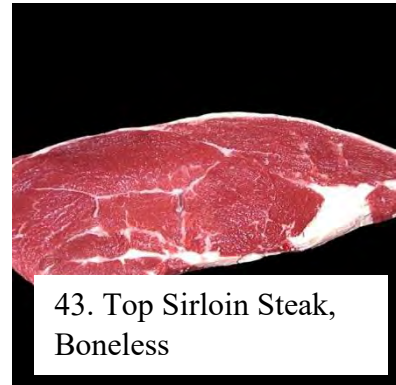
*Retail Cut Identification Answer Key – Questions 41-50*



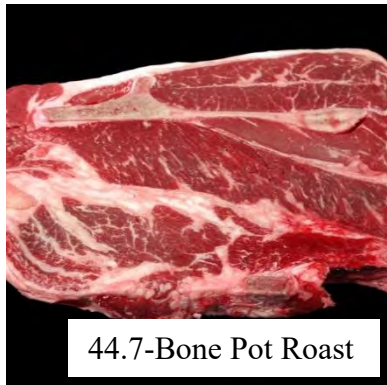
41. Top Loin Steak



42. Round Steak



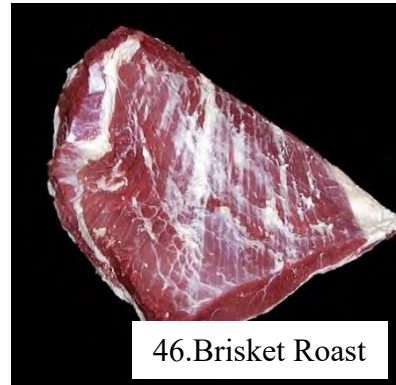
43. Top Sirloin Steak,  
Boneless



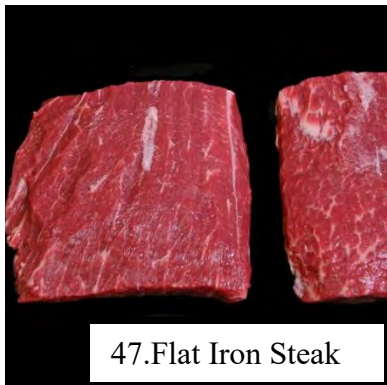
44. 7-Bone Pot Roast



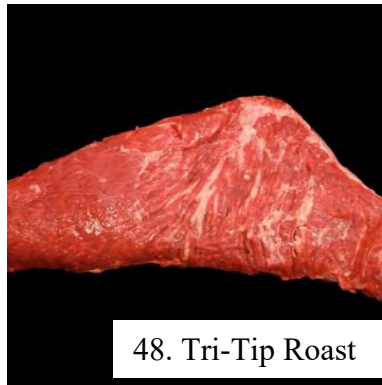
45. Bottom Round  
Rump Roast



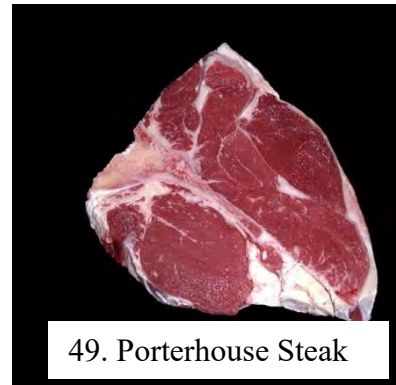
46. Brisket Roast



47. Flat Iron Steak



48. Tri-Tip Roast



49. Porterhouse Steak



50. Eye Round Roast

# Wisconsin State Fair

## 2017 Beef Supreme Exhibitor Contest

### *Quality Assurance Questions Answer Key – Questions 51-60*

#### **ScourGuard 4KC**

Label found at: <https://valleyvet.cvpSERVICE.com/product/view/basic/3690231?u=country&p=msds>

51. The withdrawal period for this product is:
- a. 0 days
  - b. 13 days
  - c. 19 days
  - d. 21 days**
  - e. 28 days
52. The acceptable route of administration is:
- a. Intramuscularly**
  - b. Intravenously
  - c. Orally
  - d. Subcutaneously
  - e. A and B are appropriate
53. When should revaccination occur in a cow?
- a. 1 – 2 weeks before each subsequent calving
  - b. 1 – 2 weeks after each subsequent calving
  - c. 3 – 6 weeks before each subsequent calving**
  - d. 3 – 6 weeks after each subsequent calving
  - e. Never
54. This product is responsible for:
- a. Preventing diarrhea in new-born calves**
  - b. Treating diarrhea in new-born calves
  - c. Preventing diarrhea in pregnant heifers and cows
  - d. Treating diarrhea in pregnant heifers and cows
  - e. Both A and C
55. It is appropriate to use half of the bottle, then store the bottle for 2 weeks and use it again.
- a. True
  - b. False**

**Wisconsin State Fair**  
**2017 Beef Supreme Exhibitor Contest**

*Quality Assurance Questions – Questions 51-60*

**DURA-PEN**

Label found at: <https://valleyvet.cvpSERVICE.com/product/view/basic/1084047?u=country&p=msds>

56. What state is this drug restricted in?

- a. **California**
- b. Missouri
- c. New York
- d. Texas
- e. Wisconsin

57. This product should be stored at:

- a. -5° - 0° F
- b. 2° - 8° F
- c. 15° - 22° F
- d. **36° - 46° F**
- e. 52° - 60° F

58. What is the most appropriate needle size to administer this product?

- a. 12 gauge
- b. 13 gauge
- c. 14 gauge
- d. 15 gauge
- e. **16 gauge**

59. The dosage for a 600-pound weaned steer is:

- a. 2 mL
- b. 4 mL
- c. **8 mL**
- d. 10 mL
- e. 12 mL

60. Beef cattle can receive up to \_\_\_\_ of doses.

- a. 1
- b. **2**
- c. 3
- d. 4
- e. 5

**Wisconsin State Fair**  
**2017 Beef Supreme Exhibitor Contest**

*Feed Classification Answer Key – Questions 61-70*

- 61. Blood Meal – (D) Protein
- 62. Calcium Carbonate – (C) Mineral
- 63. Corn – (A) Energy
- 64. Cornstalks – (B) Forage/Roughage
- 65. Dried Molasses – (A) Energy
- 66. Fish Meal – (D) Protein
- 67. Legume Hay – (B) Forage/Roughage
- 68. Limestone – (C) Mineral
- 69. Oats – (A) Energy
- 70. Soybean Meal – (D) Protein